

# IC3000 Work/Inspection Station

The IC3000 Work/Inspection Station is a flexible modular work station that can be used for multiple purposes. The on-board conveyor accepts product from upstream systems or from Martek Automation's 1110U Magazine Un-loader and positions them at the work station for assembly, rework, or inspection processes. When completed, the system conveys the product downstream to the next station or back into Martek Automation's 1110D Magazine Loader. Multiple configurations are available to meet your specific needs.

These systems are SMEMA compatible and width adjustable from 2 inches to 6 inches. The system will automatically convey boards or carriers on a stepper motor driven edge belt conveyor to the operator workstation. Martek Automation utilizes heavy duty welded steel frame construction for maximum rigidity and reliability.

The station can be configured with a simple sensor stop or with lift and locate tooling for assembly processes requiring more accuracy. Many inspection options are available from Illuminated Magnifiers, Stereo Microscopes on a manual X,Y Stage, and Video Inspection, to fully automated Vision Inspection, Bar Code Readers, and Data Acquisition capabilities.

Martek Automation's core competency is in Automated Material Handling for the Micro Electronics industry. Our experience in handling all types of devices has a proven track record that sets us apart from the competition.



## Standard features

### MODES

Inspect or pass through modes selectable.

### ADJUSTABLE WIDTHS

From 2" to 6".

### SMEMA COMPATIBLE

SMEMA interface with upstream and downstream systems.

### HEAVY DUTY WELDED SUPPORT

Marteks heavy duty welded steel frame gives added rigidity and weight to system. Competitors' extruded aluminum frames do not compare!

## Optional features

- Single, dual, or three stage conveyors
- Microscope or videoscope mounted on manual X,Y stage
- Integrated lift and clamp tooling
- Integrated bar code readers
- Static eliminating blower
- Onboard PC and monitor for data acquisition

## Facility requirements

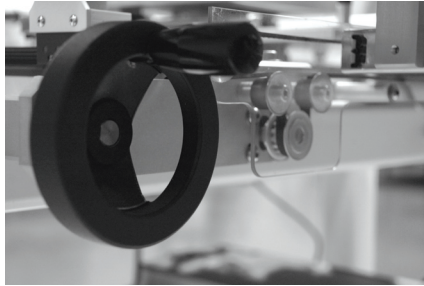
- 120/240 VAC, 50/60 HZ
- 10/5 AMP Service



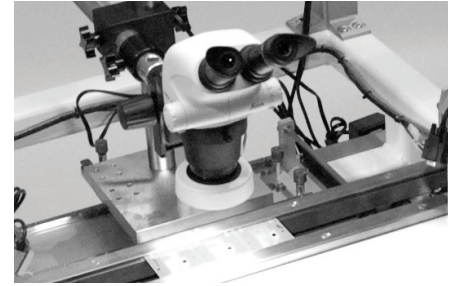
^ Operator panel with inspect and pass through selectable switch.



^ Integrated bar code readers.



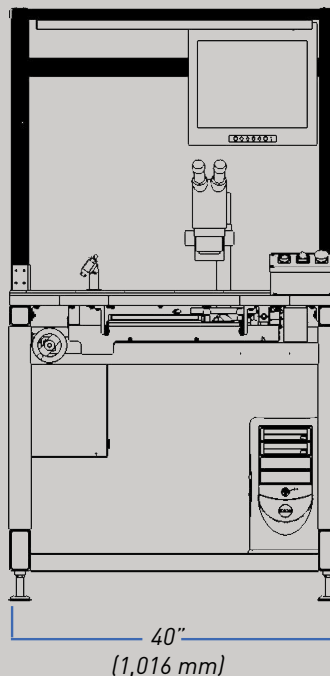
^ Adjustable width.



^ Optional microscope on X,Y stage.

## Product dimensions

### FRONT



### SIDE

